

**LEGEND**

- 75% ALLOWABLE IMPERVIOUS COVER
- 65% ALLOWABLE IMPERVIOUS COVER
- 30% ALLOWABLE IMPERVIOUS COVER

ALLOWABLE IMPERVIOUS COVER  
ACREAGE FOR 651.30 ACRE TRACT

49.00 AC @ 75% = 36.75
182.70 AC @ 65% = 118.75
419.60 AC @ 30% = 125.88
<b>TOTAL = 281.38 ACRES</b>

ALLOWABLE PERCENT IMPERVIOUS  
COVER FOR 651.30 ACRE TRACT

= 281.38 / 651.30  
= 43.20%

**LEGEND**

- 95% IMPERVIOUS COVER
- 80% IMPERVIOUS COVER
- 75% IMPERVIOUS COVER
- 65% IMPERVIOUS COVER
- 41% IMPERVIOUS COVER
- 42% IMPERVIOUS COVER
- 30% IMPERVIOUS COVER
- 100% IMPERVIOUS COVER
- 0% IMPERVIOUS COVER (FLOODPLAIN)
- 0% IMPERVIOUS COVER (GREENBELT)

PROPOSED IMPERVIOUS COVER  
ACREAGE FOR 651.30 ACRE TRACT

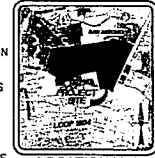
141.31 AC @ 95% = 134.24
29.01 AC @ 80% = 23.21
55.02 AC @ 75% = 42.02
3.51 AC @ 65% = 2.28
28.33 AC @ 41% = 11.62
42.55 AC @ 42% = 18.72
25.98 AC @ 30% = 7.79
283.39 AC @ 0% = 0.00
41.25 AC @ 100% = 41.25
<b>TOTAL = 281.13 ACRES</b>

PROPOSED PERCENT IMPERVIOUS  
COVER FOR 651.30 ACRE TRACT

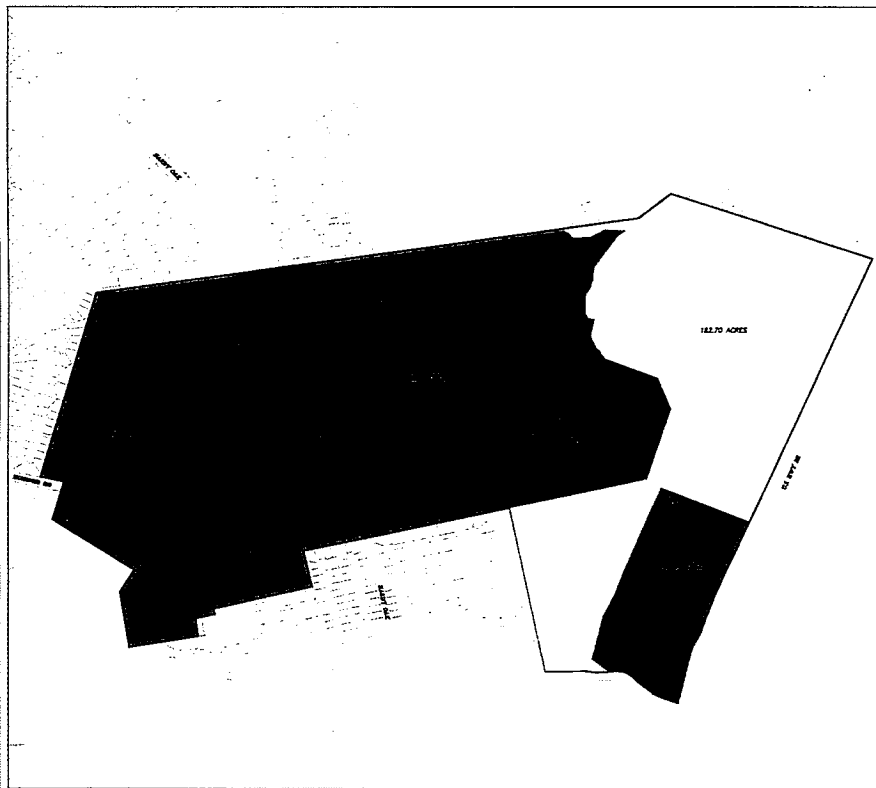
= 281.13 / 651.30  
= 43.16%

**NOTES**

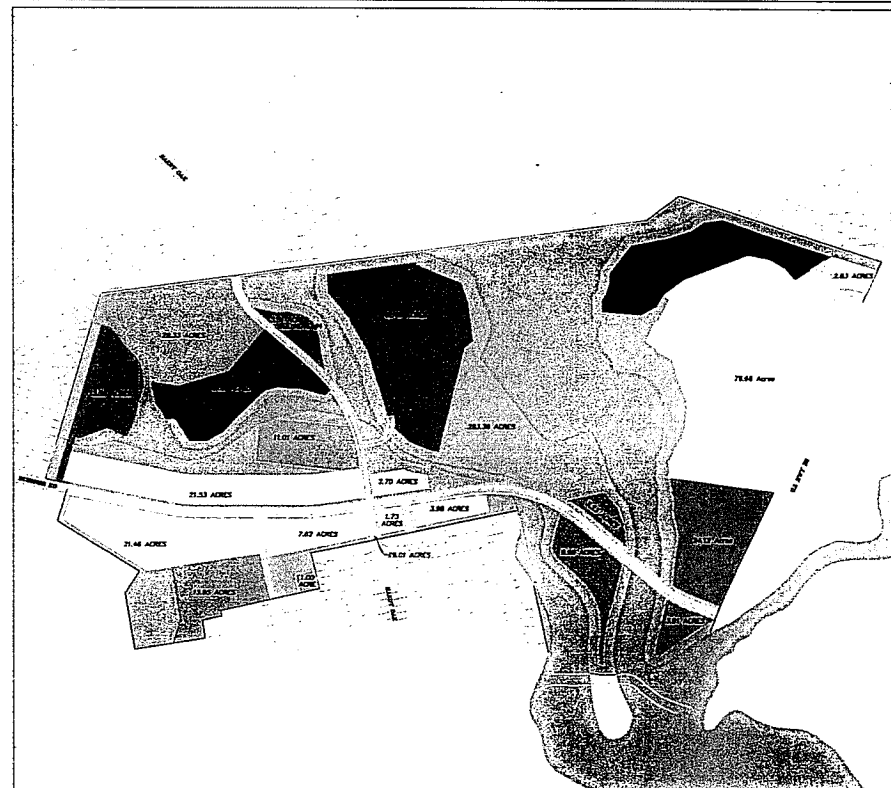
1. IMPERVIOUS COVER CALCULATIONS ARE BASED ON MAXIMUM ALLOWABLE IMPERVIOUS COVER.
2. ACREAGE AND IMPERVIOUS COVER PERCENTAGES MAY CHANGE WITHIN ALLOWABLE LIMITS AS PERMITTED BY ORDINANCE NO. 81491.
3. DRIVEWAYS THAT PROVIDE ACCESS ACROSS OPEN SPACE ADJACENT TO STREET RIGHT-OF-WAY SHALL UTILIZE IMPERVIOUS COVER ALLOCATED TO THE PROPOSED DEVELOPMENT PARCEL.
4. IMPERVIOUS COVER AREA FOR ± 3.5 ACRE TRACT SHALL NOT EXCEED 65%.



LOCATION MAP  
SCALE: 1"=600'



ALLOWABLE IMPERVIOUS COVER



PROPOSED IMPERVIOUS COVER

APPROVED: SAN ANTONIO WATER SYSTEM  
AGLETER PROTECTION AND EVALUATION

DATE: \_\_\_\_\_

ENCLOSURE

**PAPE-DAWSON  
ENGINEERS**

STEUBING RANCH  
IMPERVIOUS COVER MASTER PLAN EXHIBIT

JOB NO. 787-50  
DATE: FEBRUARY 2008  
DESIGNER: CAC  
CHECKED: JLM, DRAMM, JTM  
SHEET

DATE: APR 11, 2008, 8:16am, User: G. Drake  
FILE: P:\10\104308\Drawings\Impervious\_Cover.mxd

THIS DOCUMENT HAS BEEN PROVIDED FROM AN ORIGINAL THAT HAS CHECKS AND/OR TRANSMITTED ELECTRONICALLY AND MAY NOT HAVE BEEN PHOTOGRAPHICALLY REPRODUCED. HELP ONLY BY PHONE, AUTHORITY ON BEHALF OF THE CONSULTANT'S ORIGINAL SIGNATURE AND SEAL.

